

SUPPLEMENT TO

INSTRUCTION BOOK

VOLVO 121 and 122

Two-door version

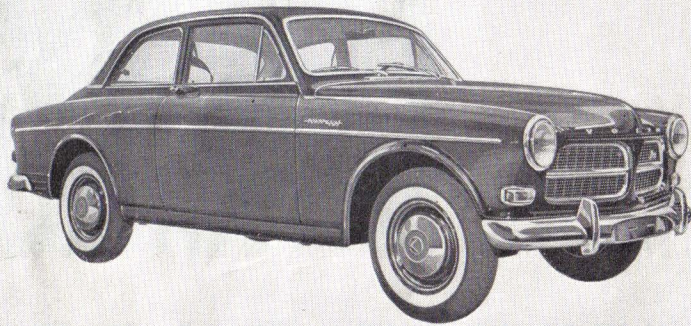


Supplement concerning two-door version of Volvo 121 and 122

The enclosed instruction book also applies to the two-door version with the following exceptions.

Body

The car is a two-door model with five seats. The doors are fitted with ventilator windows as well as windows that can be wound down. The rear quarter lights can also be opened. The front seat backrests, which are adjustable, can be tipped forwards to facilitate entry to the rear seat.



Type designation	Engine	Gearbox	Rear axle
P 120 — 13134 VA or HA	B 18 A	M 40	4.1:1
P 120 — 13234 VA or HA	B 18 D	M 40	4.1:1

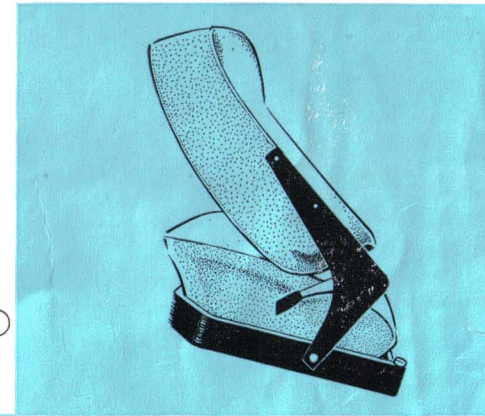
Front seats

The front seat backrests can be adjusted to three different positions by using the lever shown in Fig. 2.

When the lever is in position "2", the backrest can also be tipped forwards as shown in Fig. 1, thus facilitating entry to the rear seat.

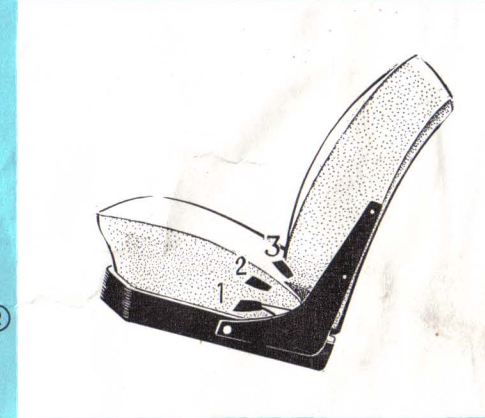
When the lever is in its lower or upper position (position "1" or "3") the backrest is locked in position and cannot tip forward.

Should you have passengers in the rear seat and nobody in the seat beside the driver, the backrest on this seat should be locked in position. In the case of violent braking, the backrest can then function as a steadying support for the rear seat passengers.



Safety belts

If safety belts are fitted, they should be hung up on the studs above the courtesy straps when not in use, see Fig. 3. Do not let the belts lie on the floor since they can thus easily get dirty and tangled.



Rear quarter lights

The rear quarter lights can be opened to a certain extent by moving the handles to various positions. When the handles are pushed back as far as they will go, the quarter lights are closed, in the intermediate position partly open and when fully forward the quarter lights are open as much as possible.

Weight

Weight including driver, 75 kg (165 lb.) 1140 kg (2515 lb.)

