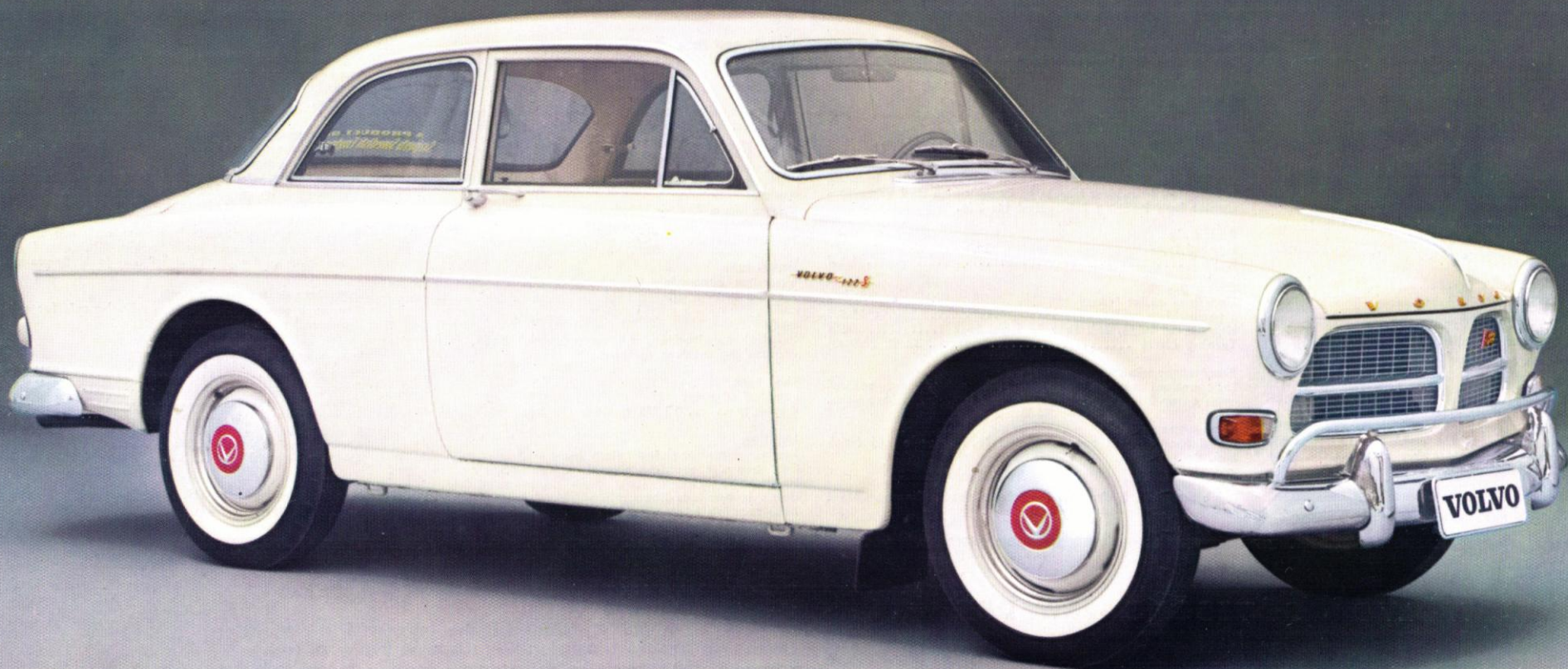


# VOLVO

122 S TWO-DOOR



# VOLVO 122 S TWO-DOOR



Speedy, smart two-door Volvo 122 S with the new B 18 engine and fully synchronized transmission.

The Volvo 122 S has a thoroughly tested basic design. Strict material specifications and rigorous control and inspection during manufacture assure dependability, hard-wearing strength and lasting value. • The new B 18 engine has an imposing technical design: five-bearing crankshaft, separate intake ports and fully machined combustion chambers are a few of the features included. These have given this engine a very high degree of effectivity, great output and excellent pulling power.



The front seat backrests can be easily adjusted to three different positions. For safety reasons, they are automatically locked in the front and rear positions. When the backrests are tipped forwards there is plenty of room for access to the rear seat. The two-door Volvo 122 S has an outstandingly comfortable rear seat. The armrests at the side have built-in ashtrays. Draft-free ventilation is assured by opening the rear side windows slightly.

## B 18 D engine

Four-cylinder, overhead valves, five-bearing crankshaft.  
 Bore ..... 3.313" (84.14 mm)  
 Stroke ..... 3.15" (80 mm)  
 Capacity ..... 1.78 liters  
 Compression ratio ..... 8.5:1  
 Max. output ..... 90 b.h.p. (SAE) at 5000 r.p.m.  
 Max. torque ..... 105 lb. ft. (14.5 kgm.) (SAE) at 3500 r.p.m.  
 Carburetors ..... two SU 1<sup>3</sup>/<sub>4</sub>" horizontal carburetors

## Cooling system

Hyper-effective radiator. Thermostat-controlled water circulation with bypass valve.

## Battery

Voltage ..... 12 V  
 Capacity ..... 60 amp. hours

## Generator

Fan-cooled with automatic voltage control.  
 Output ..... max. 30 A

## Starter motor

Output ..... 1 h.p.  
 The starter switch is combined with the ignition switch which has also an extra position in which all the electric equipment can be used when the engine is not running. There is a tamperproof armored cable between the ignition switch and the ignition coil.

## Clutch

Hydraulically operated 8<sup>1</sup>/<sub>2</sub>" single dry plate clutch.

## Transmission

Four-speed, fully synchronized and silent running transmission with a central floor shift lever.

## Ratios:

1st .....	3.13:1	3rd .....	1.36:1
2nd .....	1.99:1	4th .....	1:1
		Reverse .....	3.25:1

## Propeller shaft

Divided for vibration-free operation. The center bearing is mounted in rubber blocks to damp noise and vibration. Center ball bearing lubricated for life.

## Rear axle

Hypoid type.  
 Ratio ..... 4.1:1

## Steering gear

Cam and roller type.  
 Steering box ratio ..... 15.5:1  
 Number of turns, left lock to right lock ..... 3<sup>1</sup>/<sub>4</sub>  
 Turning circle ..... approx. 32 ft. (9.6 m)

## Front suspension

Independent suspension with coil springs and control arms carried in rubber bushings and ball joints. Stabilizer.

## Rear suspension

Fixed longitudinal support arms, torque rods and track bar. Coil springs.

## Shock absorbers

Double-acting, hydraulic, telescopic shock absorbers front and rear.

## Wheels and tires

Pressed steel wheels, all balanced. Tubeless 5.90-15" tires.

## Footbrake

Front:  
 Hydraulic disc brakes of three-cylinder type. Splash-protected and self-adjusting.  
 Discs ..... 10<sup>7</sup>/<sub>8</sub>" x 1<sup>1</sup>/<sub>2</sub>"  
 Brake friction area on each front wheel 14<sup>1</sup>/<sub>2</sub> sq. in. (92.5 sq. cm)

## Rear:

V-type drum brakes. Hydraulic and self-centering.  
 Brake friction area on each rear wheel 32<sup>1</sup>/<sub>2</sub> sq. in. (210 sq. cm)

## Handbrake

Operates separately on rear wheels. Handbrake lever located beside driving seat.

## Body

Integral construction, all-welded steel body, fully rust-proofed by modern methods.

## Fuel tank

Located at rear.  
 Capacity ..... 12 US gallons (10 Imp. galls = 45 liters)

## Lighting

Flasher directional indicators front and rear with optical and acoustic warning signal. Combined stop and tail lights. The internal light goes on when either of the doors is opened. Rheostat-controlled instrument lighting. Map-reading lamp.

## Instrumentation

Combined instrument including speedometer, fuel gauge, water temperature gauge. Odometer and trip meter. Warning lamps for battery charging, oil pressure, full beams, directional indicators.

## Other standard equipment

Horn ring on steering wheel. Foot dimmer switch. Directional indicator switch with automatic return. Heater/de-froster installation. Heater unit thermostat controlled. Low-speed heater fan with two speeds. Electric windshield wipers with two speeds and automatic parking. Nozzles for windscreen washers. Twin padded sun visors, fully adjustable. Dazzle-free rear view mirror. Accommodation for radio and loudspeaker. Cigarette lighter. Ashtrays front and rear. Tool kit and jack. Spare wheel.

## Attachments for safety belts

Standard equipment includes attachments for safety belts front and rear.

## Principal dimensions and weight

Wheelbase .....	102 <sup>1</sup> / <sub>2</sub> " (2600 mm)
Track, front .....	51 <sup>3</sup> / <sub>4</sub> " (1315 mm)
Track, rear .....	51 <sup>3</sup> / <sub>4</sub> " (1315 mm)
Overall length .....	175" (4450 mm)
Overall width .....	63 <sup>3</sup> / <sub>4</sub> " (1620 mm)
Overall height, unloaded .....	59 <sup>1</sup> / <sub>4</sub> " (1505 mm)
Unladen weight .....	approx. 2360 lb. (1070 kg)

The factory reserves the right to modify prices, design and equipment.

AB VOLVO • GÖTEBORG • SWEDEN



## Importers:

**VOLVO IMPORT, INC.**, 452 Hudson Terrace, Englewood Cliffs, New Jersey

## Distributors:

**VOLVO DISTRIBUTING, INC.**, 452 Hudson Terrace, Englewood Cliffs, New Jersey

**SWEDISH MOTOR IMPORT, INC.**, 3301 West 12th Street, Houston 24, Texas

**VOLVO WESTERN DISTRIBUTING, INC.**, 12925 Riverside Drive, Sherman Oaks, Calif.

## In Canada:

**VOLVO [CANADA] LTD.** Head Office: 440 Comstock Road, Scarborough (Toronto), Ont.

Branch Office: 1090 W. Georgia St., Vancouver 5, B. C.